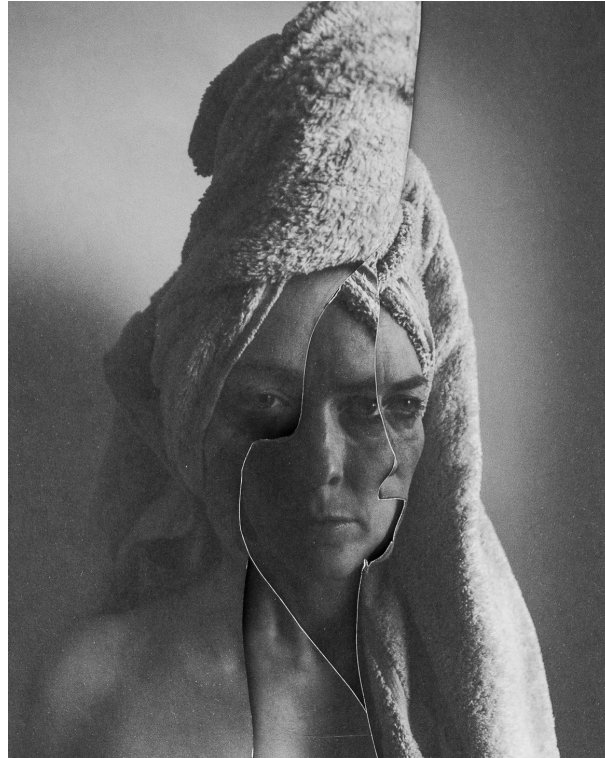


## Sorry I'm Not Sorry Lauren Joy Kennett Exhibition Opening April 2024



© Lauren Joy Kennett, I didn't know who I was and so I was all gone

Photoworks are pleased to announce a new exhibition by Lauren Joy Kennett, opening at Aspex Portsmouth from 12 April.

In Lauren Joy Kennett's new body of work, she explores her experience of living with undiagnosed autism. Through autobiographical and archive photography, Lauren uses cutting and collaging techniques to explore self-discovery, confrontation of life's traumas and experiences that have shaped her existence.

12 April - 30 June 2024  
Aspex Portsmouth  
PO1 3BF

*I say sorry all the time.*

*Sorry because I think I'm wrong or I'm in the way or I'm late or I forgot to do something I said I would do or I missed another appointment. Sorry sorry sorry and sometimes I say I'm sorry even if it doesn't make sense when I don't know what to else to say.*

Through autobiographical and archive photography, LJK uses cutting and collaging techniques to explore self-discovery, confrontation of life's traumas and experiences that have shaped her existence.

These fragmented and reassembled self-portraits serve as a visceral expression of the autistic experience. They capture the frustration of perpetual misunderstanding and an incapacity to articulate inner turmoil. The images encapsulate the alienation and loneliness experienced and the exhaustive effort to conform.

Using old family photographs, she reconstructs and reinterprets childhood memories; a process of dismantling and piecing together her identity to understand her past.

L returns to her childhood home in the countryside, seeking understanding and resolution with her parents. As she watches her son play as she once did, she begins to form new memories and look towards the future. This journey reveals new strength, grounded in self-awareness and acceptance.

Sorry I'm Not Sorry not only reflects LJK's personal story but also resonates with the wider late-discovered autistic community and neurotypical people, inviting empathy and a deeper understanding.

In Focus is a partnership between Photoworks and Aspex Portsmouth and part of Explorers, a national creative programme to increase the visibility and representation of neurodivergent artists in contemporary visual arts, led by Project Art Works with cultural partners nationwide.

For more information, please contact [info@photoworks.org.uk](mailto:info@photoworks.org.uk).

To watch a short film with Lauren Joy Kennett about the project and process [please click here](#).

**END**

## **Lauren Joy Kennett**

(B. 1983 in Brecon, Wales, UK)

Lauren is a Brighton-based autobiographical artist working with photography, hand-cut collage and text. The artist works with photocopy prints and a scalpel to combine intimate black-and-white portraits with symbolic landscapes, to give form to the unconscious. Exploring themes of love and loneliness, Lauren's work tells a story of sex, abortion, miscarriage and mental health.

## **About Photoworks**

Photoworks champions photography for everyone. We are an international platform, global in reach, and have provided opportunities for artists and audiences since 1995. We do not have a physical venue, but our online channels are always open. Our programme brings new experiences to audiences and opens up new ways to encounter photography.

Photoworks is a registered charity and the only organisation with a national remit for photography in England. Our work is supported by public funding through Arts Council England's National Portfolio. From September 2023 Photoworks is led by Louise Fedotov-Clements, Director.

[photoworks.org.uk](http://photoworks.org.uk)  
[@photoworks\\_uk](https://www.instagram.com/photoworks_uk)

## **About Aspex Portsmouth**

Aspex brings new art and ideas to the heart of Portsmouth.

As a visual arts and educational charity, our mission is to cultivate art, creativity and a collaborative community. We believe art makes our lives better, brings joy, broadens minds, facilitates learning and creates meaningful connections in our communities. We create opportunities for people of all ages and backgrounds to experience contemporary visual art – from looking and discussing, to making and curating. We achieve this by delivering an exciting and varied programme of exhibitions, off-site projects and participation events.

For over 40 years, we have supported sensational artists at the early stages of their careers. Artists such as Mona Hatoum, Richard Wilson and Susan Collis, all now internationally-acclaimed, received support from Aspex. Today, we continue to offer the next generation of contemporary visual artists a platform from which to launch their careers.

<https://aspex.org.uk/>

## **About Spectrum**

Spectrum is a longstanding professional imaging lab specialising in high quality fine art and photographic printing, as well as archival mounting. They are proud of the reputation that they have established for themselves and are known for their high quality, passion, and above all, excellent service to their customers.

[spectrumphoto.co.uk](http://spectrumphoto.co.uk)

## **About Explorers II: In Focus**

In Focus is an ongoing programme run by Photoworks and includes new commissions, photography clubs, and public events designed with and for neurodiverse artists and communities. In Focus commissions support the creation of new work specifically by a neurodiverse adult, including those who may be non-verbal or require complex support.

In Focus is part of a wider programme called Explorers; comprising awareness-raising activity, commissions, exhibitions, seminars, and events developed by Project Art Works in partnership with Photoworks and other cultural partners, with and for neurodiverse communities, placing them at the heart of social, civic, and cultural activity.

[explorersproject.org](http://explorersproject.org)